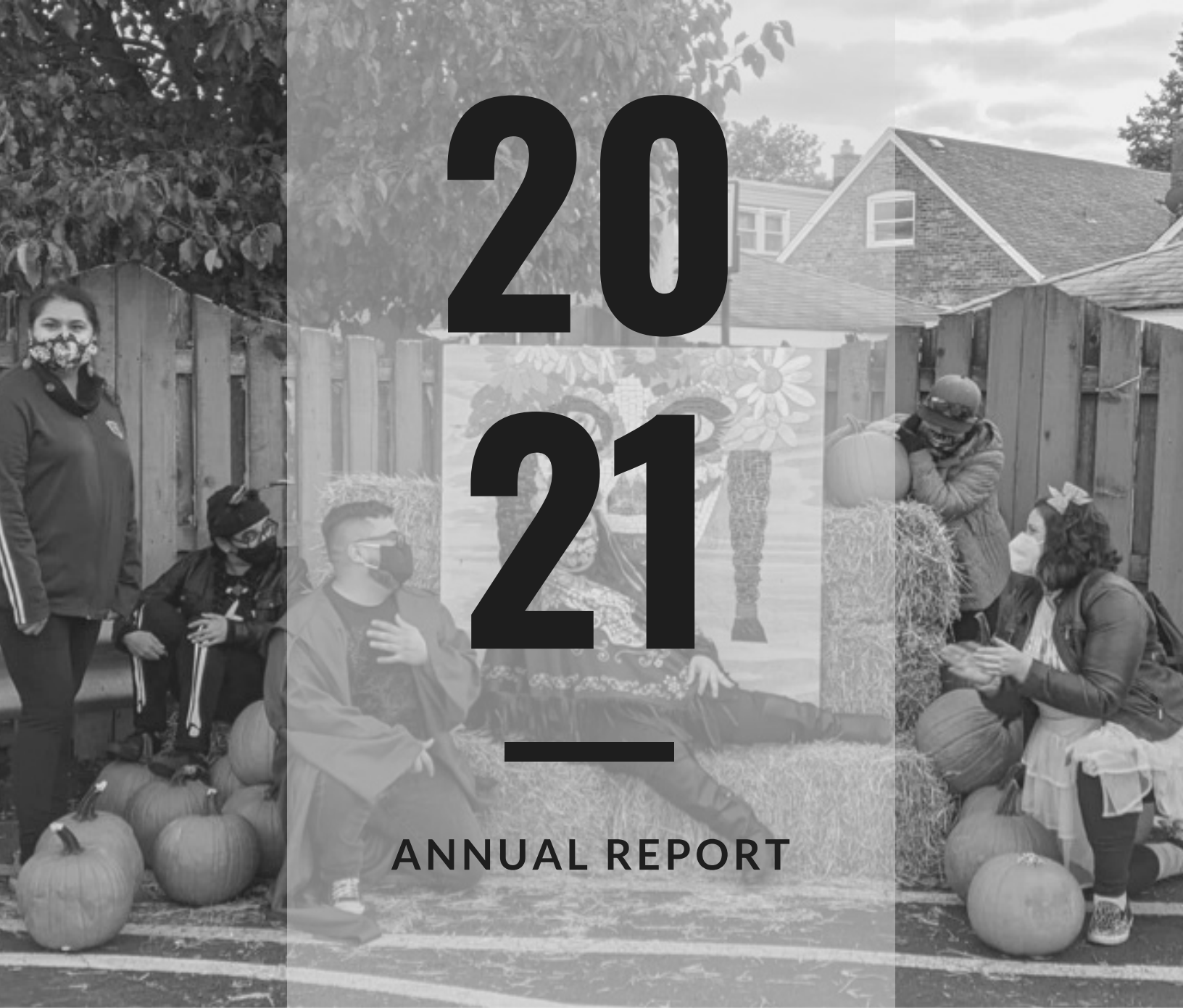




20 21

ANNUAL REPORT





3 / EXECUTIVE LETTER

5 / VISION 2022-5

15 / OUR DEI ROADMAP

17 / PROGRAM BREAKDOWN

23 / FINANCIALS

24 / THANK YOU

CONTENTS



FROM ENRIQUE & JAIME

To even sit down and try to remember the first half of 2021...it's like digging in an overstuffed, dusty file cabinet to find a single slip of paper. So many things happened within The Southwest Collective in 2021 that it's often surprising to all of us that it happened within the past 12 months.

After caring for our communities during the darkest months of the pandemic, January found us hopeful for a vaccination, and potentially a return to something resembling normalcy. The southwest side was turned upside down by COVID, and the ripple effect of all that loss is still reverberating across our communities.

We began the year in earnest, with plans to help our communities rebuild as a part of several relief efforts focused on equity.

However, as the year continued, we began to see the inequities within the City's equity efforts themselves, which made us dig in harder to vocalize the issues and organize our community further.

We also faced an uphill battle at the state level, in assisting small businesses through the Back 2 Business program. Throughout the summer, we regularly provided bilingual workshops and outreach to ensure business owners applied for this funding. It turned out that many were facing barriers, such as having a business that was established too recently, for example.

Now, as we begin a new year, we are acutely aware that "relief" may not be readily available to our communities in the ways we pictured, and we look to 2022 with a renewed and strengthened sense of purpose. And for that, we want to thank all of our current SWC Board of Directors, volunteers, partners and stewards - without them, we'd be in a much darker place.

SWC will re-tool in 2022 to focus more on the development of our group and its strategic growth areas, detailed within this report.

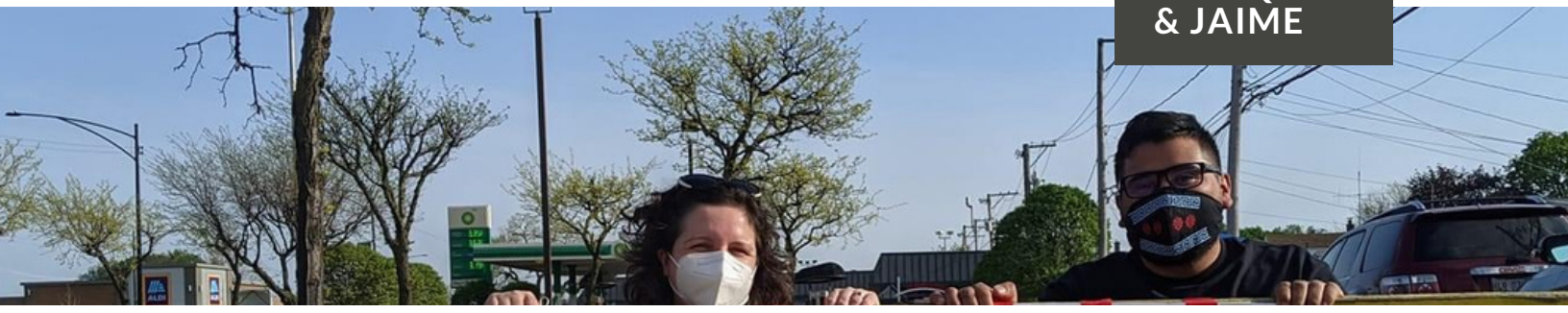
We will continue to do the hard work alongside our established partners, because it's important work - after all, equity is at the heart of our mission and every program we execute.

Looking forward, we will lay the groundwork to empower our communities and ensure that folks benefit from funding at the city and state level without encountering so many obstacles.

To our friends, family and neighbors on the southwest side, we are with you - even (and especially) when things get hard.

In Solidarity,

ENRIQUE
& JAIME



VISION 2022-5





A MORE EQUITABLE SW SIDE

Over the course of the next few years, our work will focus on inequity in all its forms - and how we can balance it out.

From healthcare to food to small business to environmental justice, SWC will address the barriers to access head-on, building programs and teams that can level the playing field for all of us on the southwest side.

HEALTHCARE EQUITY

With a vaccine widely available, we can begin to put the crisis portion of the pandemic behind us; however, now we must address the inequities within our healthcare infrastructure, starting with local access. As part of the Healthy Chicago Equity Zone initiative, we will continue this fight to 2025 and beyond.

We believe that healthcare is a right, not a privilege.

And we remain hopeful that the pandemic will loosen its grip on our communities. As our city, and particularly our communities here on the southwest side, continue to slowly recover, we are reviewing our experiences in caring for those around us. And we want to start organizing to address several pillars related to healthcare inequity - access to nutritious food, environmental justice, proximity to FQHCs, availability of reliable transportation and affordability of care.

There are far more issues related to equity in healthcare; however, we think these are the most pressing to address on the southwest side in particular, as we come to terms with the long-term effects of the COVID pandemic.



PARTNERS FOR GROWTH: HEALTHCARE EQUITY



Healthy Chicago 2025 is Chicago's five-year community health improvement plan that focuses on racial and health equity to meet our goal of reducing the Black-white life expectancy gap. SWC has been selected to represent the Garfield Ridge community for the duration of this initiative.

SWOP

A new partner through the Healthy Chicago Equity Zone program, Southwest Organizing Project has invited SWC to help fight inequities in healthcare on the southwest side of Chicago through 2025.



HEALTHY SOUTHWEST



SWC works alongside Metro Family Services, Envision, Esperanza, Increase the Peace, The Resurrection Project, SWOP, GPLXC and PODER to bring equity to healthcare on the southwest side.



SMALL BUSINESS SUPPORT

While providing outreach for the Back 2 Business grant this summer, we saw a lot of inequity across small business lending, leasing and technical assistance. And now, our strong relationships with local businesses provide us with a unique opportunity to organize business owners similarly to how unions organize workers.

We plan to build out our SW Chi Chamber at a regional level in order to support local job creators and keep money in the community - and develop financial education and access so everyone can build capital and power.

With a local, major redevelopment of LeClaire Courts on its way to approval, as well as so many newly minted entrepreneurs working to build their own businesses, we think the time is right to implement programming that can place them in more permanent environments, such as storefronts.

We think the typical chamber of commerce can be revamped to include more culturally relevant support systems, such as bilingual technical assistance, sector-specific pilot programs, part-time talent fairs focused specifically on first-time job applicants, return-to-workers and other segments of our local population, as well as monthly workshop sessions on topics like marketing or taxes, to help business owners stay competitive in a very challenging environment. With the support of a network of business owners, we'll host these events across the southwest side, starting in January 2022.



@swchichamber



swchichamber.org

PARTNERS FOR GROWTH: SMALL BUSINESS



IHCC

The Illinois Hispanic Chamber of Commerce has leaned in to help SWC build a regional chamber, and to provide necessary, bilingual technical assistance to small businesses.

ILLINOIS DCEO

As part of the outreach team for the Back 2 Business grant, we worked closely with the Illinois Dept. of Commerce and Economic Opportunity, advocating for more programming for new business owners.



VISION 2022-5: EQUITY

FOOD ACCESS

Food deserts, skyrocketing food costs and access to high quality, fresh and nutritious food - these were major themes we recognized as we strategized many different ways to feed our neighbors, friends and family during the hardest and scariest parts of the past two years.

We believe that no one should go hungry, and that is why we have taken steps throughout the course of this pandemic and beyond to ensure our communities are fed.

We quickly realized that the weekly food drive was not enough to sustain folks, especially those with dietary restrictions such as lactose intolerance, high blood pressure, diabetes or allergies. So we began working closely with organizations such as Project 22:NINE and Chicagoland Food Sovereignty Coalition to begin rescuing high-quality food - almond milk, coconut oil, gluten-free snacks, fresh produce - and re-distribute them in high-need areas.

Once we found a few abandoned newspaper boxes, our plan bloomed into a beautiful reality: we could set up "pop-up pantries" in areas where the need was greatest, without disrupting those communities, or inadvertently blocking access with application paperwork and referrals, which we know can often deter folks from seeking assistance.

In 2022, we plan to deepen and strengthen our relationships with our partner organizations, as well as with local youth, to create a solid and reliable framework of mutual aid on the greater southwest side.





PARTNERS FOR GROWTH: FOOD ACCESS



CFSC

Through the pandemic last year, we were able to feed and sustain our communities thanks to the efforts of our friends at CFSC. This year, we expanded our partnership to help them push for equitable access to food across the city.

LOVE FRIDGE

Our friends at The Love Fridge continue to supply critical cold storage in disproportionately impacted areas across the city. Since the network's expansion last summer to the southwest side, we've been able to share rescued food and prepared meals with our communities.



VISION 2022-5: EQUITY

ENVIRONMENTAL JUSTICE

Our heavily industrial corner of the city is low on trees, green space and safe public walkways. Also, many of our main routes are positively choked with semi truck traffic and regular, daily freight train interruption. With factories everywhere, and, by design, across from all of our high schools, the time is NOW to fight for environmental justice.

To be very clear, SWC adopts the HHS definition of environmental justice: specifically, it is the fair treatment and meaningful involvement of all people regardless of race, color, national origin, or income in the development, implementation, and enforcement of environmental laws, regulations, and policies.

Our strategy is to first provide information specific to the southwest side of Chicago. We'll accomplish that through tree planting and green space programs, bilingual nature walks, air monitoring and reporting, flooding and particulate matter mitigation, working to alleviate the urban heat island effect, and other similar initiatives to illustrate the importance of organizing for stricter guidelines and improved public health, tree canopies, flood mitigation, increased walkways, safer bike lanes and routes, improved mental health and more public green spaces to enjoy.

The next generation deserves this.





PARTNERS FOR GROWTH: ENVIRONMENTAL JUSTICE

OPENLANDS

Openlands has helped us improve the tree canopy on the southwest side, and we'll be partnering up to continue that work around the LeClaire Courts redevelopment in Garfield Ridge.



DIVVY

Chicago's citywide bike share program reached out to us as they began planning an expansion of Divvy stations on the southwest side. We hosted two online forums to gather community feedback; participated in several potential site visits; and arranged for free bike rentals at SWC community bike rides over the summer.



WORKING BIKES

This Pilsen-based nonprofit fixes up old bikes that are either sold at a discount or donated by the shipping container-full to communities around the world. Working Bikes generously donated 10 refurbished children's bikes that SWC subsequently gave away at Freebies for Families, vaccination drives, and other public events.



REGULAR COLLABORATORS

UNITED CREDIT UNION

This partnership continues to grow and we are grateful for the use of space as well as the enthusiasm from everyone on staff at UCU.



STREETWISE



As a fellow YWCA Empowerment Collaborative member, StreetWise teamed up with SWC to provide prepared meals to communities in need via The Love Fridge. We consult StreetWise on matters pertaining to barriers that prevent folks from finding adequate housing, and how to compassionately come to their aid.

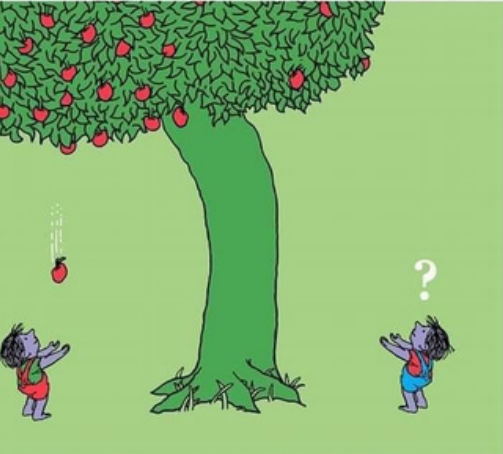
ASTRRONGU

Combining efforts, SWC + ASTRONGU are able to connect most meaningfully with youth as well as their families here in the communities we serve.



**DIVERSITY.
EQUITY.
INCLUSION.**

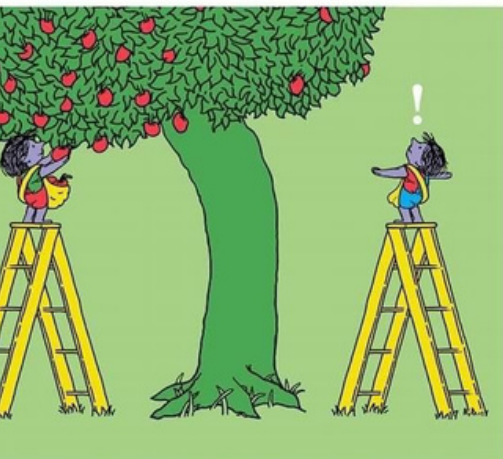




OUR APPROACH

With generous and kind coaching from our friends at AMPT and Esperanza Health Centers, we will, in 2022, author our very own Diversity, Equity and Inclusion (also known as DEI) policy.

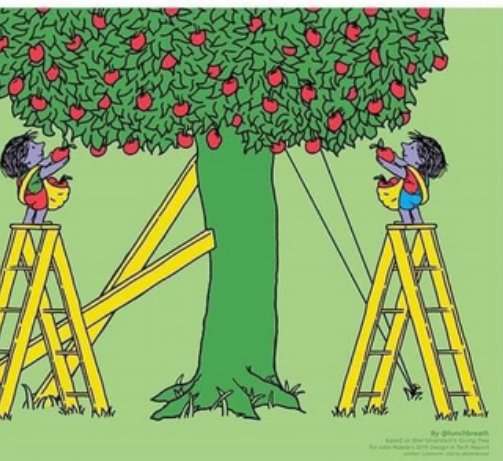
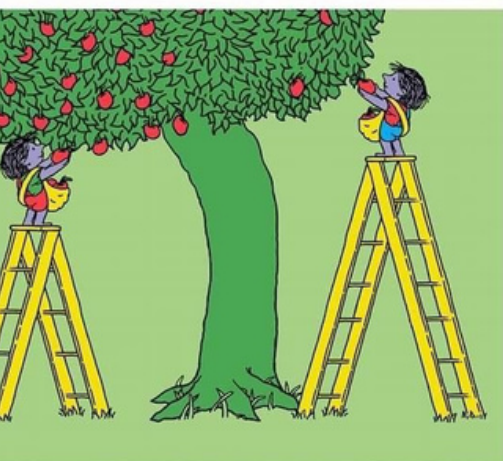
We want to write our own, that is unique to the Collective, and its many communities. And to do that authentically...



WE NEED YOUR HELP

We would like to take this space to invite you to join our Diversity, Equity and Inclusion Committee, which will function independently from our Board of Directors, in order to foster candid conversation and ensure that SWC continues to represent the southwest side in earnest.

If you are interested in joining this effort, please let us know. We'd love to hear your perspective.



PROGRAM BREAKDOWNS





FOOD'S HERE PROGRAM

1,600

FAMILIES
SUSTAINED

\$2.4K

SUPPLEMENTAL
WAGES PROVIDED
LOCALLY

1,761

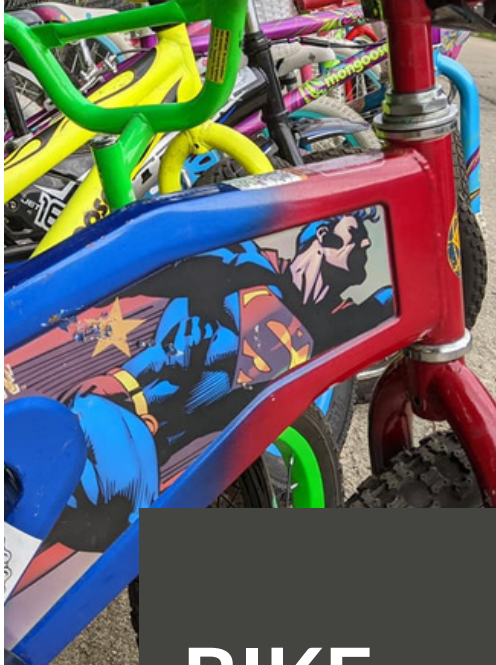
MEALS RESCUED &
REDISTRIBUTED

SUMMARY OF PROGRAM

Our vision was simple: Rescue food waste created by subscription meal overages, redistribute to communities in need and employ local restaurant crews to aid in distribution.

And the need had never been greater: while the official poverty rate of the ENTIRE USA in 2019 was 10.9%, that rate in Chicago on the southwest side was 20%.

We partnered with another nonprofit, Project 22:NINE, to bring free food into the communities, and have it portioned out by local restaurant crews, effectively supplementing their wages with a few extra hours each week. This program received quite a bit of press as well, from Block Club to FOX32.



BIKE ADVOCACY

10

KIDS' BIKES
DONATED VIA
WORKING BIKES

10

FAMILY-FRIENDLY
BIKE RIDES
ORGANIZED

10

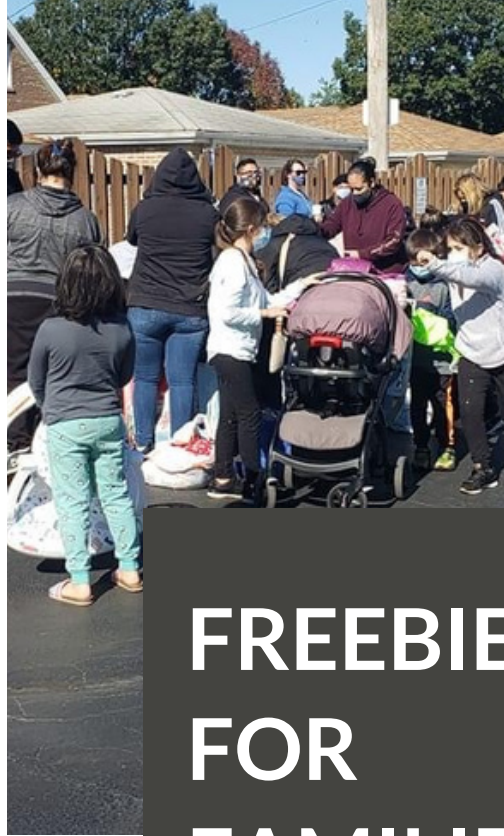
MILES OF ARCHER
AVE ANALYZED FOR
BIKE-FRIENDLINESS

SUMMARY OF PROGRAM

At first glance, the southwest side might not seem like the most hospitable place for cyclists. Major streets like Pulaski and Cicero are practically highways; freight lines and industry make it hard to connect one neighborhood to the next; and there are very few bike lanes to be found.

But look closer and you'll find a community of cyclists of all ages who want to be out and about in their neighborhoods. That's why we hosted a series of monthly community bike rides that started and ended at local parks, with routes that stuck exclusively to the side streets and only crossed major streets at a traffic light or stop sign.

Our rides started from Archer Park, Vittum Park, Wentworth Park, Hale Park, West Lawn Park, and Midway Airport, and attracted over 100 riders over the course of the year. In 2022, we're planning another series of rides, starting at parks and in neighborhoods east of Pulaski.



FREEBIES FOR FAMILIES

360

FAMILIES
SERVED

3

DIFFERENT
COMMUNITY
LOCATIONS

4

FAMILY SERVICES
AGENCIES
REFERRING
FAMILIES TO US

SUMMARY OF PROGRAM

Every month, SWC's Families Group hosts Freebies for Families, where parents drop off gently used gear and clothing for other parents to take.

Started in response to the tragic murder of Marlen Ochoa-Lopez, this event provides a safe meeting place for parents and guardians to trade items and cut down on waste.

We host the events across several communities, West Lawn, Archer Heights, and Garfield Ridge, to provide as much access as possible.

Since its inception in May 2019, we have been able to help many families bridge the gap to payday.



REGIONAL CHAMBER DEVELOPMENT

192

BUSINESSES
ASSISTED

\$2.5K

FUNDS DISPERSED
INTO THE LOCAL
ECONOMY

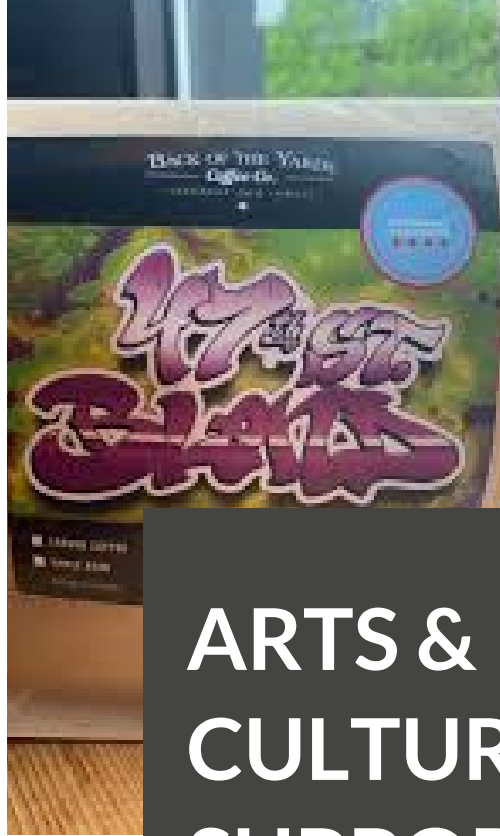
120

HOURS OF
OUTREACH &
TECHNICAL
ASSISTANCE
PROVIDED

SUMMARY OF PROGRAM

SWC began building a regional chamber in 2020 to help small businesses gain and hold an important place in the community. By teaming up with this chamber, we're able to strengthen community ties across neighborhoods with unique, grassroots initiatives that drive real action and benefit both residents and business owners alike.

In 2021 alone, we assisted nearly 200 small businesses with the Back 2 Business grant application, marketing assistance, networking opportunities and talent fairs to connect them with staffers - as well as original programs like our Gift Guide and Food's Here.



ARTS & CULTURE SUPPORT

3

ARTS-FOCUSED
PROGRAMS
INITIATED

5

COMMUNITY ART
PROJECTS
COMPLETED

\$3K

PAID TO LOCAL
ARTISTS

SUMMARY OF PROGRAM

We believe that incorporating the arts is important to our communities' overall well-being. That's why we're quick to partner with local authors, nonprofit dance and theater studios and to provide art kits to folks as an outlet for the stresses of life.

This year, we added an arts component to Freebies for Families, had local authors launch new library boxes and provided free supplies to families to help them enjoy traditions like Dia de los Muertos and Halloween with our communities.



A blue wooden bookshelf is filled with children's books. The books are arranged in a row, with some standing upright and others lying flat. The books include 'The Lightning Thief' by Rick Riordan, 'The Baby-Sitters Club' by Ann Darcy, 'Dork Diaries' by Rachel Hartman, and 'The Baby-Sitters Club' by Ann Darcy. A sign on the shelf reads 'GET YOUR VACCINE AT HOME!' and 'CALL 352.748.4835 TO SCHEDULE A VISIT.' The sign also features a QR code and a small illustration of a person wearing a mask. The bookshelf is set against a background of green foliage.

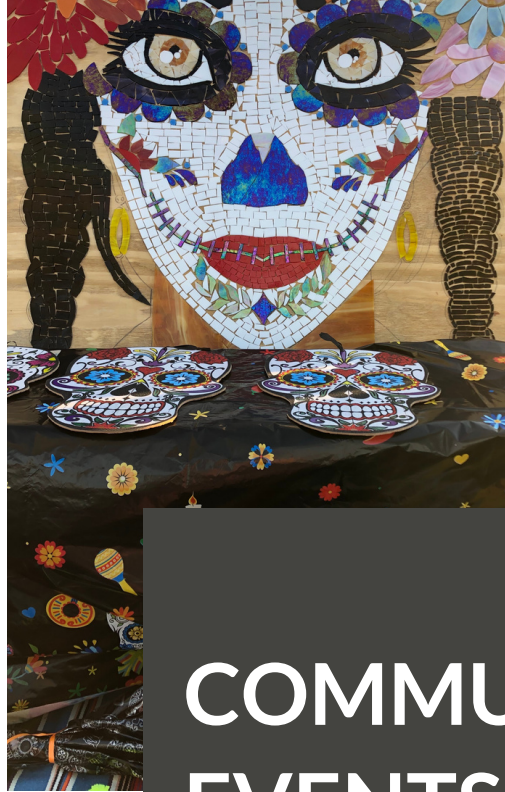
It's a simple concept: put up a box, let people give and take books. But these boxes are so much more to the SW side, especially in a pandemic year.

SWC, through its partnership with N2N Literacy Project, has installed two more boxes across the region, bringing the total within our network to 15 - 13 of which are installed in public parks.

We use these libraries to provide outreach to our communities - bringing them masks and vaccination info - as well as to engage youth via scavenger hunts, surprise gift drops and other fun things to keep everyone excited about having one of these in their neighborhoods.

LIBRARIES
INSTALLED

BOOKS SAVED
FROM LANDFILL



COMMUNITY EVENTS

300+

FAMILIES
ATTENDING
EACH EVENT

15

COMMUNITY
PARTNERS
TABLED

33

SERVICE HOURS
COMPLETED BY
LOCAL YOUTH

SUMMARY OF PROGRAM

Our community events unlock new relationships and build on existing ones. And, this year, with social distancing still top of mind, we focused on fewer and more impactful community events - which we began at the end of the summer.

To send kids back to school, we had a backpack giveaway at Pasteur, complete with pizza and DJ. For October, we combined Halloween and Dia de los Muertos, encouraging families to join us for calavera making as well as a trunk-or-treat.

To support small businesses, we organized a Merry Market with 10+ local vendors, to coincide with the drop of our annual Gift Guide for the SW Side.

Wait til you see what we planned for 2022.

2021 FINANCIALS



The Southwest Collective
SWC Profit and Loss by Fund
January 1 - November 18, 2021

	Community Garden	Cook County Grant	Enterprise Grant	Food's Here Program	Freebies for Families	General SWC Fund	IHCC Grant	Little Libraries	SWOP - Vaccine Equity	TOTAL
Income										
43300 Direct Public Grants			1,500.00							1,500.00
43340 Nonprofit Organization Grants						1,000.00	18,699.99		50,000.00	69,699.99
43400 Direct Public Support				600.00	300.00	520.00				1,420.00
43401 Donation Payment						9,138.62				9,138.62
43402 Subscription Donations						152.28				152.28
Total 43400 Direct Public Support	\$ 0.00	\$ 0.00	\$ 0.00	\$ 600.00	\$ 300.00	\$ 9,810.90	\$ 0.00	\$ 0.00	\$ 0.00	\$ 10,710.90
44500 Government Grants		1,500.00								1,500.00
Total Income	\$ 0.00	\$ 1,500.00	\$ 1,500.00	\$ 600.00	\$ 300.00	\$ 10,810.90	\$ 18,699.99	\$ 0.00	\$ 50,000.00	\$ 83,410.89
Gross Profit	\$ 0.00	\$ 1,500.00	\$ 1,500.00	\$ 600.00	\$ 300.00	\$ 10,810.90	\$ 18,699.99	\$ 0.00	\$ 50,000.00	\$ 83,410.89
Expenses										
60300 Awards and Grants					20.00	1,051.00				1,071.00
60900 Business Expenses						15.00				15.00
60901 Bank Charges & Fees						197.20				197.20
Total 60900 Business Expenses	\$ 0.00	\$ 0.00	\$ 0.00	\$ 0.00	\$ 0.00	\$ 212.20	\$ 0.00	\$ 0.00	\$ 0.00	\$ 212.20
62100 Contract Services				4,492.02		232.00	16,796.00			21,520.02
62101 Professional and Technical Services	1,607.46					947.93	167.92		23,739.75	26,463.06
62102 PHA (COVID)						85.25			16,525.75	16,611.00
Total 62100 Contract Services	\$ 1,607.46	\$ 0.00	\$ 0.00	\$ 4,492.02	\$ 0.00	\$ 1,265.18	\$ 16,963.92	\$ 0.00	\$ 40,265.50	\$ 64,594.08
62110 Accounting Fees						29.75				29.75
62140 Legal Fees						2,080.64				2,080.64
62800 Office/General Administrative Expenses						1,027.00				1,027.00
62801 Office Rent									5,500.00	5,500.00
62802 Furniture									384.75	384.75
62803 Equipment							425.11		2,870.99	3,296.10
62805 Office Supplies/Expenses					35.72	64.00	57.25			156.97
Expenses	\$ 0.00	\$ 0.00	\$ 0.00	\$ 0.00	\$ 35.72	\$ 1,091.00	\$ 482.36	\$ 0.00	\$ 8,755.74	\$ 10,364.82
62890 Rent, Parking, Utilities (deleted)						74.68				74.68
65010 Books, Subscriptions, Reference						503.19		41.20	16.34	560.73
65020 Postage, Mailing Service						39.22				39.22
65030 Printing and Copying						1,592.10	348.16		132.96	2,073.22
65040 Supplies	510.95			635.87	157.62	771.21		2,102.50	7,371.58	11,549.73
65060 Website/Technology Costs						160.14				160.14
65100 Other Types of Expenses						1,128.58				1,128.58
65110 Advertising Expenses						44.00	40.00		100.00	184.00
65120 Insurance - Liability, D and O						859.84				859.84
65160 Other Costs						60.00				60.00
65181 Licenses						107.97				107.97
68300 Travel and Meetings	194.93					64.00	9.00		32.46	300.39
68301 Meetings Expenses						1,050.53	111.76	152.86	174.82	1,489.97
68302 Car/van rentals									285.88	285.88
Total 68300 Travel and Meetings	\$ 194.93	\$ 0.00	\$ 0.00	\$ 0.00	\$ 0.00	\$ 1,114.53	\$ 120.76	\$ 152.86	\$ 493.16	\$ 2,076.24
68305 Volunteer/Event meals and refreshments					7.80	187.56				195.36
99999 Uncategorized Expense						165.00				165.00
Total Expenses	\$ 2,313.34	\$ 0.00	\$ 0.00	\$ 5,127.89	\$ 221.14	\$ 12,537.79	\$ 17,955.20	\$ 2,296.56	\$ 57,135.28	\$ 97,587.20
Net Operating Income	-\$2,313.34	\$1,500.00	\$1,500.00	-\$4,527.89	\$78.86	-\$1,726.89	\$744.79	-\$2,296.56	-\$7,135.28	-\$14,176.31
Net Income	-\$2,313.34	\$1,500.00	\$1,500.00	-\$4,527.89	\$78.86	-\$1,726.89	\$744.79	-\$2,296.56	-\$7,135.28	-\$14,176.31

THANK YOU



swcollective.org